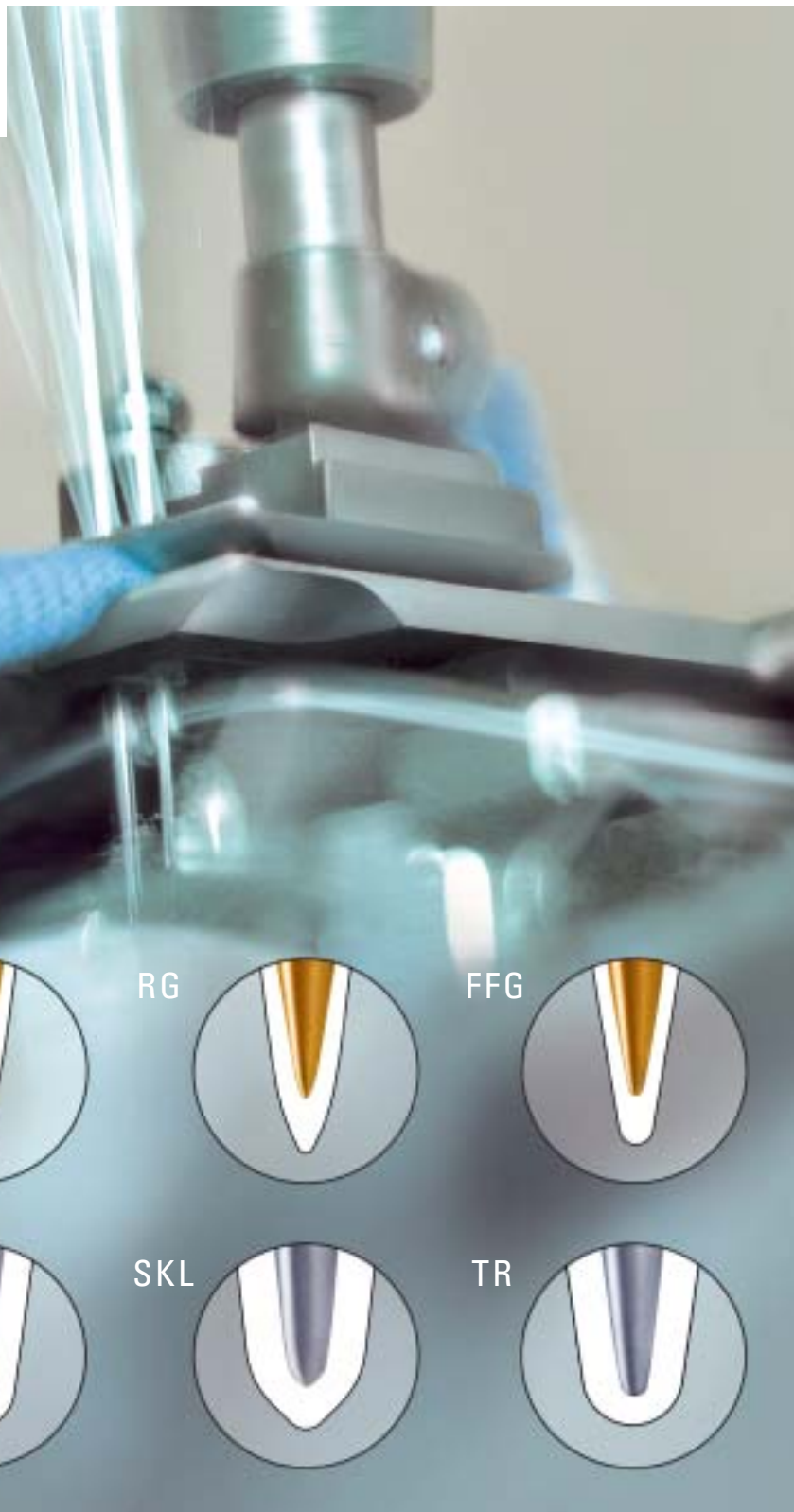




GROZ-BECKERT
CLOTH POINTS



RS



R



RG



FFG



FG



G



SKL



TR



All textiles, whether woven, warped, felted or knitted, are sewn with a specific needle point shape to suit their structure.

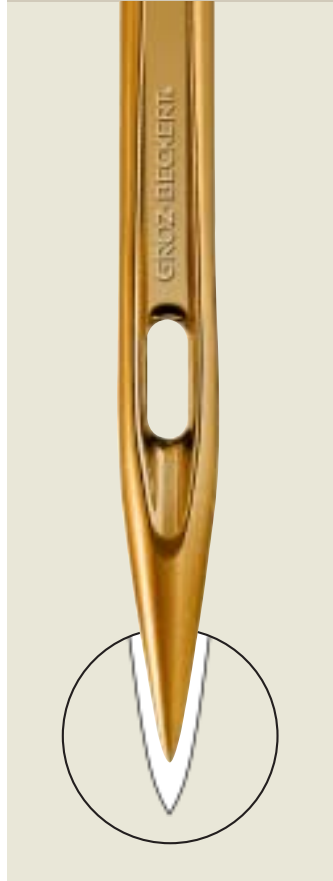
The right choice of point has a significant effect on the finished sewing results. The right needle tip will give you the tip-top results you want.

GROZ-BECKERT CLOTH POINTS

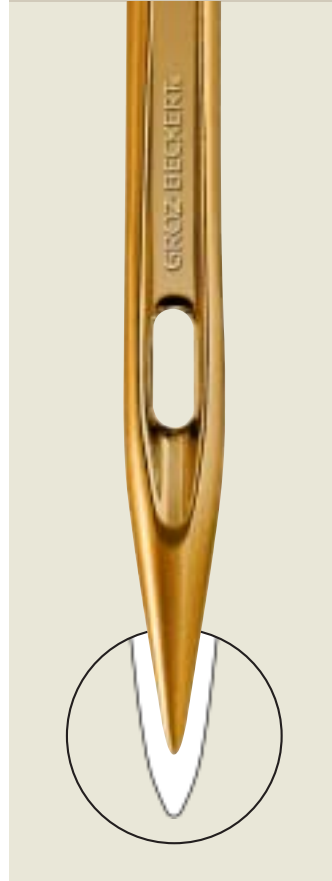
SPECIFICATIONS AND APPLICATIONS



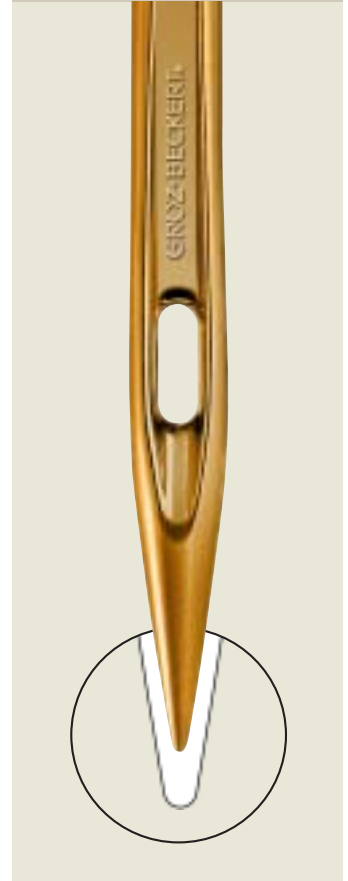
Standard for blindstitch needles. For precise stitch sequence in lockstitch operations susceptible to damage (sensitive point)



Most common for all kinds of lock stitch applications (FST 301), particularly for woven fabrics*, artificial leather, coated fabrics, * woven and felted denim



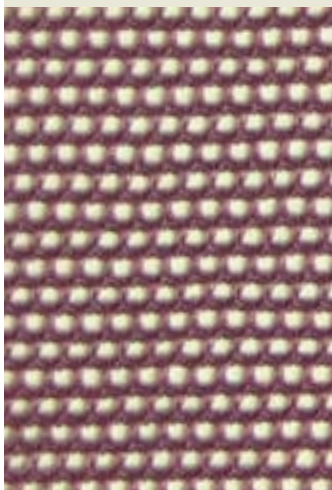
Highly recommended for all chainstich (FST 401) operations, for knitted fabrics microfibrres, button sewing, multiple-head embroidery, leather for garments




For knitted fabrics and for wovens

ALSO AVAILABLE IN GEBEDUR®

FG/SUK 



Recommended for highly elasticated fabrics with rubber or elastomeric contents

G 



For coarse and open structured elasticated fabrics

SKL 



For warped fabric knits with a high percentage of elastane (underwear)

TR 



Application in "Schiffli" embroidery for open structures like tulle and curtains

POINT CLASSIFICATIONS IN THE MARKET

Designation	Groz-Beckert-Equivalent	Designation	Groz-Beckert-Equivalent
B BALL	FG	RS	RS
BPL	FFG	S BALL	RG
EH	RG	S SET	RS
FFG	FFG	SES	FFG
FG	FG	SET	R
G	G	SET RT	RG
H BALL	G	SI	FG
H SET	RG	SIN	FFG
J BALL	FFG	SKF	G
L BALL	FFG	SKL	SKL
M BALL	FG	SPI	RS
NEW RD	RG	STU	RG
NYR	FFG	STUB	RG
R	R	SUK	FG
R-SPI	RS	TB	FFG
R-STU	RG	TR	TR
RD	R	U BALL	G
RG	RG	Y BALL	G

Different needle manufacturers use different specifications for the same needle points

This guide will help you find the right Groz-Beckert specification.